

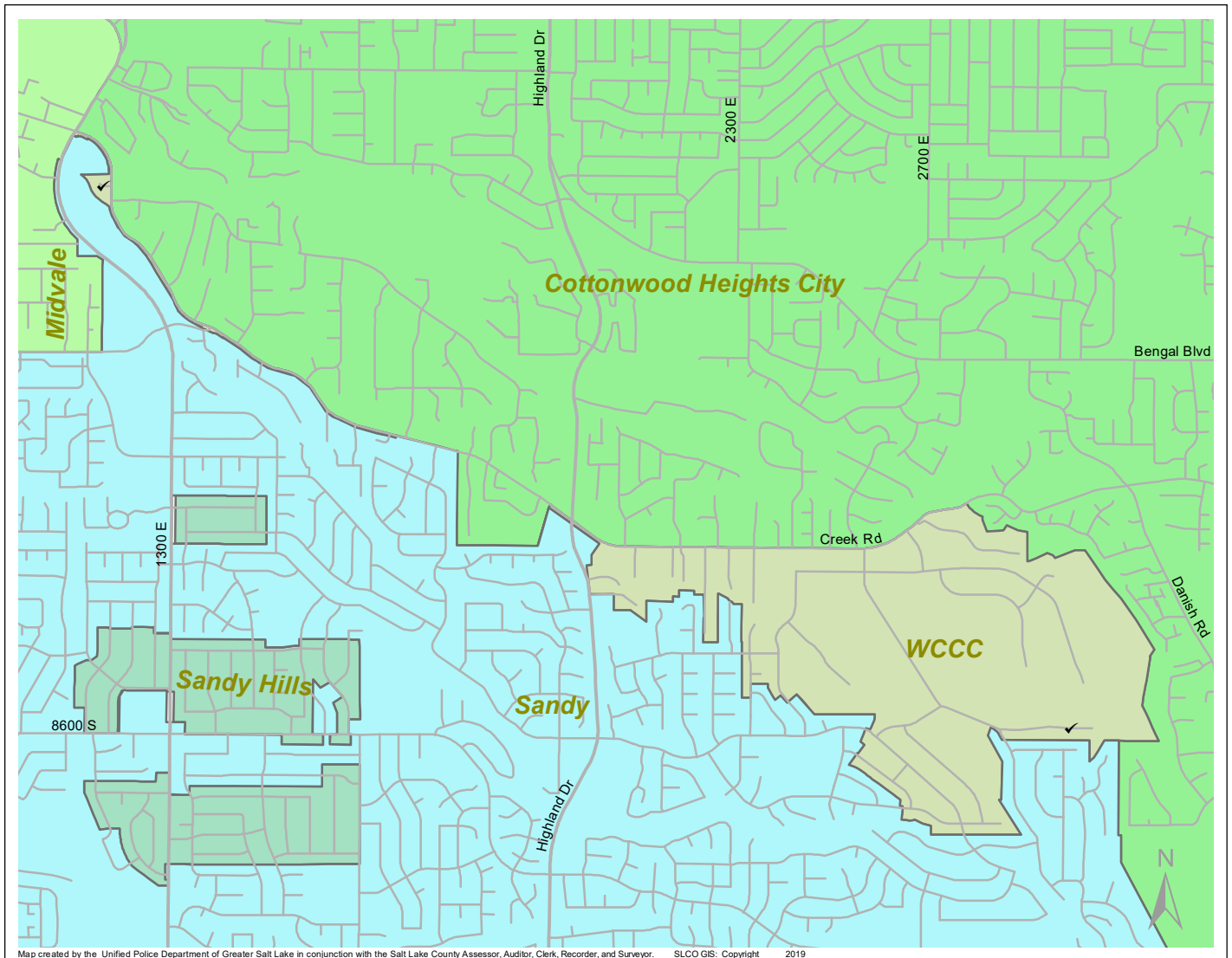
Case Report: WCCC

2018

Dec



UNIFIED POLICE
GREATER SALT LAKE



Map created by the Unified Police Department of Greater Salt Lake in conjunction with the Salt Lake County Assessor, Auditor, Clerk, Recorder, and Surveyor. SLCO GIS: Copyright 2019

Total Number of Calls: 35
 Total Number of Cases: 9
 Total Number of Offenses: 9

SUMMARY OF GROUP A CRIMES	
Arson: 0	Domestic Violence: 0
Assaults: 0	Drive-By Shootings: 0
--Aggravated: 0	Drug Offenses: 0
--Simple: 0	Gang-related: 0
Auto Thefts: 0	Graffiti: 0
Burglary: 0	Hate Crimes: Unavailable
--Business: 0	Juvenile-related: Unavailable
--Residential: 0	Sex Crimes: 0
Homicide: 0	Suspicious Circumstances: 2
Sexual Assault: 0	Vandalism: 0
Robbery: 0	Weapon Violation: 0
Theft/Larceny: 0	Weapon/Force Involved: 0
Vehicle Burglary: 0	1 (Gun): 0
	2 (Knife): 0
	3 (Force Involved): 0
	5 (Unknown): 0
	6 (Rifle/Shotgun): 0

Note: These count totals represent activity in the designated area ONLY, and only during the specified time period.

- LEGEND:**
- Arson
 - Assault-Aggravated or Simple
 - Auto Theft
 - Burglary-Business or Residential
 - Domestic Violence
 - Drive-By Shooting
 - Drug-related Offense
 - Graffiti
 - Homicide
 - Sexual Assault
 - Robbery
 - Sex Offense
 - Suspicious Circumstance
 - Theft/Larceny
 - Vandalism
 - Vehicle Burglary
 - Weapon Violation