

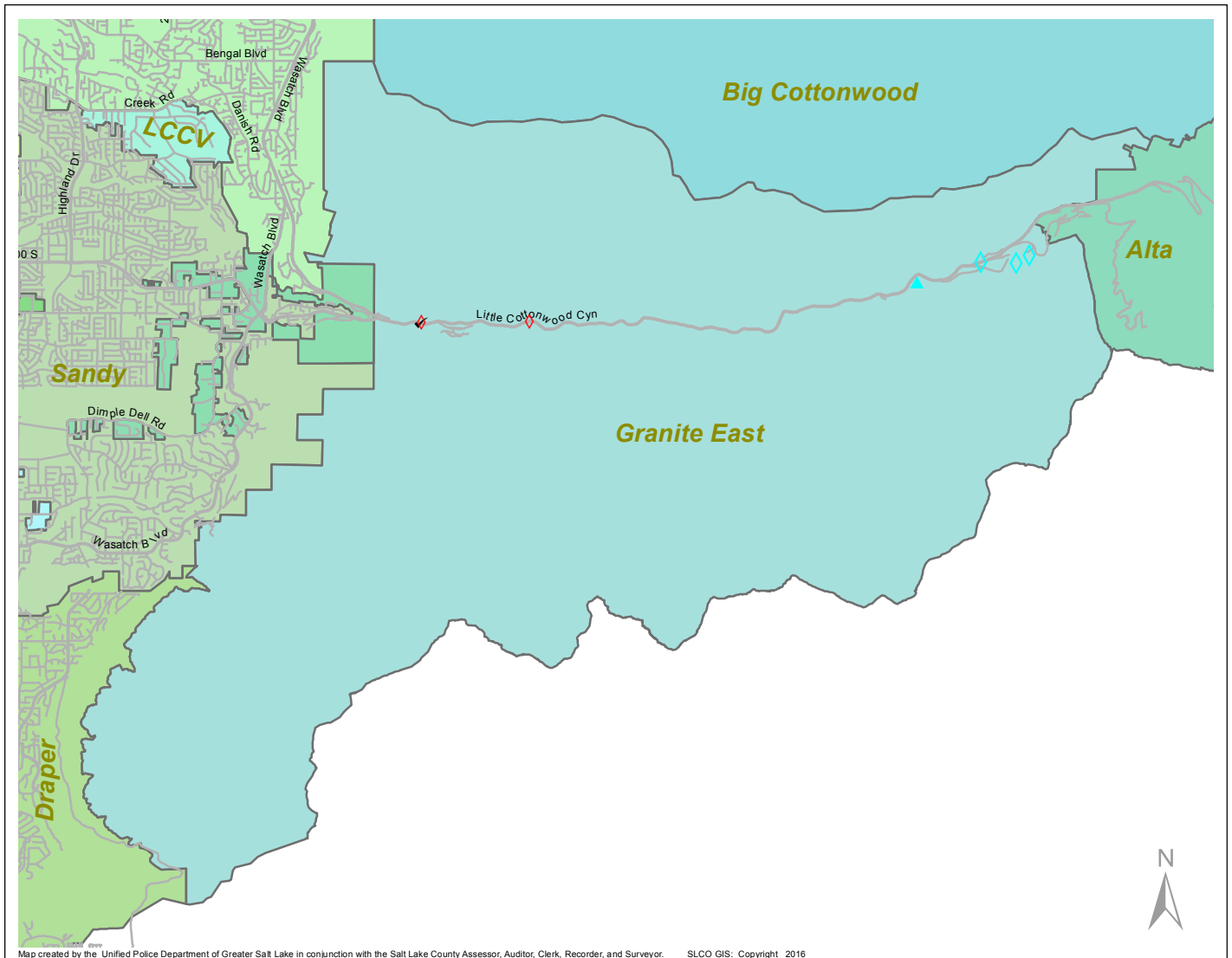
# Case Report: Granite East

2016

Jan



**UNIFIED POLICE**  
GREATER SALT LAKE



Map created by the Unified Police Department of Greater Salt Lake in conjunction with the Salt Lake County Assessor, Auditor, Clerk, Recorder, and Surveyor. SLCO GIS: Copyright 2016

Total Number of Calls: 88  
 Total Number of Cases: 24  
 Total Number of Offenses: 28

| SUMMARY OF GROUP A CRIMES  |                                      |
|----------------------------|--------------------------------------|
| <b>Arson:</b> 0            | <b>Domestic Violence:</b> 0          |
| <b>Assaults:</b> 0         | <b>Drive-By Shootings:</b> 0         |
| --Aggravated: 0            | <b>Drug Offenses:</b> 0              |
| --Simple: 0                | <b>Gang-related:</b> 0               |
| <b>Auto Thefts:</b> 2      | <b>Graffiti:</b> 0                   |
| <b>Burglary:</b> 0         | <b>Hate Crimes:</b> Unavailable      |
| --Business: 0              | <b>Juvenile-related:</b> Unavailable |
| --Residential: 0           | <b>Sex Crimes:</b> 1                 |
| <b>Homicide:</b> 0         | <b>Suspicious Circumstances:</b> 1   |
| <b>Sexual Assault:</b> 0   | <b>Vandalism:</b> 0                  |
| <b>Robbery:</b> 0          | <b>Weapon Violation:</b> 0           |
| <b>Theft/Larceny:</b> 3    | <b>Weapon/Force Involved:</b> 0      |
| <b>Vehicle Burglary:</b> 2 | 1 (Gun): 0                           |
|                            | 2 (Knife): 0                         |
|                            | 3 (Force Involved): 0                |
|                            | 5 (Unknown): 0                       |
|                            | 6 (Rifle/Shotgun): 0                 |

Note: These count totals represent activity in the designated area ONLY, and only during the specified time period.

- LEGEND:**
- Arson
  - Assault-Aggravated or Simple
  - Auto Theft
  - Burglary-Business or Residential
  - Domestic Violence
  - Drive-By Shooting
  - Drug-related Offense
  - Graffiti
  - Homicide
  - Sexual Assault
  - Robbery
  - Sex Offense
  - Suspicious Circumstance
  - Theft/Larceny
  - Vandalism
  - Vehicle Burglary
  - Weapon Violation